

INSTRUCTION MANUAL

PNEUMATIC DISC SANDER

Please read this manual carefully before you attempt to use your tool so that you may use it properly and safely.

MYTON Model MAS-20B **PROFESSIONAL TOOL**



Specifications

Model	MAS-20B
Maximum Operating Pressure	0.6 MPa
Air Consumption (No Load)	0.4 m ³ /min
Rated Speed (No Load)	22,000 min ⁻¹ (r/min)
Chuck Size	6 mm
Mass (Weight)	0.5 kg
Sound Pressure Level	82 dB(A)
Sound Power Level	93 dB(A)
Vibration Level	0.8 m/s ²
Thread Size of Air Inlet	Rc1/4

Due to continuous product development/improvement the specifications and configurations in this document are subject to change without prior notice.



Manufactured by :

NITTO KOHKI Co., Ltd.

2-9-4, Nakaikagami, Ohta-ku,
Tokyo, 146-8555, Japan

Tel : (81)-3-3755-1111

Fax : (81)-3-3753-8791

E-mail : overseas@nitto-kohki.co.jp

URL : www.nitto-kohki.co.jp

Keep the manual handy – so you can use it whenever necessary.

Original Instructions

Thank you very much for your purchase of this **Nitto Kohki products.**

Before using your tool, please read this manual carefully so that you may use it properly to get the most out of it.

Please keep the manual handy - so you can use it whenever necessary.

- **English** : Please ask your dealer or distributor for instruction manual in local language(s).
- **German** : Bitte fragen Sie Ihren Händler nach eine Betriebsanleitung in Landessprache.
- **French** : S'il vous plait, veuillez demandez á votre fournisseur de manuel instruction en langue locale.
- **Spanish** : Por favor, cantacte con su distribuidor para el manual de instrucciones en español.
- **Portuguese** : Por favor pessa ao seo agente ou distribuidor o manual de instrucces ih linguagen local.
- **Italian** : Per Manuale Istruzioni in lingua locale Vi preghiamo di rivolgervi al rivenditore o distributore.
- **Dutch** : Vraag uw handelaar om een nederladstalige gebruiksaanwijzing.
- **Swedish** : Be er lokala Åtreförsäljare eller distributör om manualer pá svenska.
- **Danish** : Venligst henvend Dem til den danske distributør for instructions manualer.
- **Polish** : Prosze pytac swojego dealera lub dystrybutora o instrukcje obslugi w jezyku localnym.
- **中文** : 請向當地供應商或經銷商詢問中文使用說明書

CONTENTS

	page
IMPORTANT SAFETY INSTRUCTIONS	2
GENERAL: TOOLS	2
GENERAL: PNEUMATIC TOOLS	3
INSTRUCTIONS FOR THIS TOOL	4
1. USAGE	4
2. CHECK THE CONTENTS OF THE PACKAGE	4
3. PART NAME	5
4. AIR SUPPLY	5
5. PREPARATIONS	5
6. MOUNTING AND REMOVING THE PAD AND ADRASIVE PAPER.....	5
7. HOW TO OPERATE THE TOOL.....	6
8. STORAGE	6
9. ORDERING SERVICE PARTS	6
10. OPTIONAL PARTS	6
11. EXPLODED DIAGRAM : MAS-20B	7

PICTOGRAM



Warning: It might be dangerous to operate the tool if the instructions supplied are not followed.



Using this tool improperly could result in serious injury. Read the instruction manual before using.



Always wear suitable eye protection.



Always wear suitable hearing protection.



Always wear respiratory protective equipment (PPE).

The following Safety notations are used throughout the manual to highlight safety precautions for the user and for the tool.



WARNING:

Indicates a potentially hazardous situation which, if not avoided by following the instructions given, could result in death or serious injury.



CAUTION:

Indicates a potentially hazardous situation which, if not avoided by following the instructions given, could result in injury or material damage.

Please note, however, that failure to observe safety precautions under the "⚠Caution" category could result in a serious occurrence depending on the situation: please observe all safety precautions in the manual.

Caution: Important precautions for tool setup, operation and maintenance.

IMPORTANT SAFETY INSTRUCTIONS

When using the tool, please observe the safety precautions below to prevent possible accident or injury.

GENERAL: TOOLS

WARNING

TO OPERATORS

- **Wear proper clothing for the type of work being done.**
Take care so that clothing, ties, hair etc. will not become entangled with the moving parts. If items become entangled it will cause the operator to be pulled towards the tool and lead to possible cause of accident or injury.
- **Always wear suitable eye protection.**
Remember, regular glasses are not safety glasses. The lenses are only shock resistant, which will not give you sufficient eye protection you may need in your working environment.
- **Always wear suitable hearing protection.**
- **Wear respiratory protective equipment (PPE).**
Wear respiratory protective equipment (PPE) when working in an environment where dust particles are generated in operation.
- **Avoid working posture that is too stressful.**
Always ensure a firm footing and well balanced posture.
- **Do not operate the tool if you are too tired.**
- **Never touch any moving parts of the tool when running.**

ABOUT WORK AREA

- **Keep the work area clean.**
Cluttered work areas (e.g. workbench) invite accidents.
- **Carefully select the work area.**
Do not expose tool to rain.
Do not use tool in a wet or soaked area.
See that the work area is adequately illuminated.
- **Never work near inflammable liquid or in a potentially explosive atmosphere.**
- **Keep children away from the work area.**
Keep children and unauthorized people away from the work area to avoid accident or injury.

BEFORE OPERATION

- **Inspect tool before use.**
Before using, check that screws are securely tightened, that any protective cover or guard is securely in place, other parts are free from damage and that the tool runs as it should.
Check that moving parts are properly adjusted for positioning and tightened, that parts are free from damage and properly mounted, and that all other parts are in good condition for normal operation.
Should you find any damage to the protective cover or other part, replace it in accordance with the Operation Manual. If there are no instructions in the Manual, please contact the sales agent through which you have purchased your tool or an authorized dealer near you for repair.
Likewise, if a switch failure occurs, contact sales agent through which you have purchased your tool or an authorized dealer near you for repair.
Do not use the tool if it does not start or stop with the start/stop switch.
- **Securely mount cutter.**
An improperly mounted cutter may fly out, causing possible damage to the tool or injury to the operator.
- **Always remove spanner, wrench, etc., once adjustment has been made with them.**
- **Use a tool appropriate for the application.**
Avoid heavy-duty application that is beyond the capacity of tool.
- **Do not use the tool for purposes other than what it is designed for.**
- **Do not abuse tool.**
Use tool in accordance with the specifications: you'll get the most out of it while ensuring safety.
- **Securely fasten workpiece in place.**
Use a vice or clamp to securely fasten the workpiece in place. It is much safer this way than holding it in your hand, allowing you to operate the tool with both hands.

ABOUT HANDLING

- **How to store tool.**
When the tool is not used, store it in a dry area and out of reach of children.
- **How to carry tool.**
Do not touch the start switch while the tool is being carried.
- **Do not leave the tool unattended while it is running.**
Turn off the start switch and disconnect the tool from power source. Do not leave the work area until the tool comes to a complete stop.

MAINTENANCE/SERVICE

- **Do not take apart or modify tool.**

Disassembly or modification carried out without the supervision of a qualified or authorized service engineer could result in an accident or injury.

- **Inspect cutting tool and accessories, etc.**

Always check to see that cutting tool and accessories, etc. are in good operating condition without damage or deterioration before you mount them on the tool. Should you find any damage to an accessory or part, please contact sales agent through which you have purchased your tool or an authorized dealer near you for repair.

- **Check parts for damage.**

When you have found damage to accessory or other part, carefully check the damaged part to determine the extent of influence it has upon the functions of the tool – that is, determine whether it can still perform its normal functions.

Check to see that the linkage of the moving parts is OK, that all parts are OK without damage, that they are properly mounted, and that the tool functions normally. Should you find any damage to an accessory or part that may hamper proper functioning of the tool, please contact sales agent through which you have purchased your tool or an authorized dealer near you for repair.

- **Have your tool repaired at an authorized Nitto Service Center.**

For repair or parts replacement, please contact the sales agent through which you have purchased your tool or an authorized dealer near you.

- **Use only Nitto genuine parts.**

Use of improper parts may result in serious accident. To obtain a Nitto genuine part, consult this Manual or contact the sales agent from which you have purchased your tool directly.

- **Do not detach label or nameplate from tool.**

When a label/nameplate gets damaged, worn or becomes missing, contact the sales agent through which you have purchased your tool or Nitto Kohki Co. Ltd, directly for a replacement.

DISPOSAL

- When a tool is taken permanently out of service, it is advised that the tool is disassembled, degreased and parts separated by material and recycled locally in the appropriate manner.

GENERAL: PNEUMATIC TOOLS

WARNING

- **Use appropriate air pressure.**

Excessively high air pressure will increase the tool number of revolutions or strokes causing not only potential premature failure/breakage but could also lead to an unexpected accident or injury.

- **Connect tool to air supply line.**

There are various types of pipes running in a factory in addition to the pneumatic line (such as oxygen, nitrogen, gas and water). For this reason, always ensure that you are connecting to the pneumatic line.

- **Start tool properly.**

Turn the start switch OFF before connecting to the air supply line.

- **Always disconnect the tool from the air supply line before putting on/taking off any accessory and prior to carrying out any maintenance work.**

- **Avoid exposure to exhaust air.**

Pneumatic tool exhaust air contains oil and contaminated moisture. Make sure the exhaust air is not directed towards your face or anyone else within the work area.

- **Keep tool off electricity.**

This pneumatic tool is not electrically insulated. To avoid a potential electric shock do not use where there is a possibility of coming into contact with live electricity.

CAUTION

- **Handle tool carefully.**

Abusive use of tool could invite failure or accident. Do not throw, drop or shock the tool.

- **Handle connecting hose carefully.**

Do not carry the tool by the connecting hose. Do not pull the connecting hose to disconnect.

INSTRUCTIONS FOR THIS TOOL

About Your Tool

WARNING

- **Always wear safety glasses when operating the Myton Sander.**

Always wear safety glasses. The operation of your Myton Sander will cause flying chips and particles. These will cause severe eye injuries.

You must always wear safety glasses.

Not all glasses are safety glasses. Wear safety glasses that comply with safety standards (e. g. ANSI, ISO).

Not all lenses are shock resistant. Ordinary glasses will not provide sufficient eye protection.

- **Always wear a dust-proof mask.**

Use of the Myton Sander will release particles, including oil and moisture contaminants. Always use respiratory protection.

Never operate the Myton Sander without respiratory protection. The contaminants may be inhaled and cause Serious respiratory problems.

- **Always use hearing protection.**

Always use hearing protection. The Myton Sander creates a loud noise. Prolonged exposure to loud noise can cause severe damage to your hearing. Not all ear plugs offer adequate hearing protection.

Always wear head gear or ear plugs that comply with safety standards (e. g. ANSI, ISO).

- **Everyone in the area of operation of a Myton Sander must wear hearing protection.**

Do not operate the Myton Sander near others who are not wearing adequate hearing protection devices.

Always make sure to comply with any local regulations or laws about dangerous noise levels.

- **For Abrasive Paper only.**

Only Abrasive Paper must be used for the MAS-20B. Grinding wheels must never be used for the unit.

- **Checking before attaching Abrasive Paper.**

Never use any Abrasive Paper for which the allowable rotation speed shown on the Abrasive Paper is lower than the free speed of the MAS-20B. Small rotation speed of the Abrasive Paper causes damage, which in turn may result in serious accidents.

Check for tears or chips on Abrasive Papers or pads; defective ones must not be used. NO Abrasive Paper soaked in liquid such as water must be used.

A defective Abrasive Paper causes damage, which in turn may result in serious accidents.

- **Checking after attaching Abrasive Paper.**

After attaching a new Abrasive Paper, place the unit under an iron workbench to run it at least for one minute. Make sure that there is nobody around the rotation surface of the Paper. The test run usually reveals defects on the Paper, improper attachment, and incorrect dimensions or rotation speed.

- **Checking the rotation speed.**

Make sure that the air pressure is set at 0.6MPa at the start and that the free speed does not exceed the rotation speed specified on the unit label or in the instruction manual. If the rotation speed exceeds the limit, request check and repair to the authorized Nitto dealer.

- **Proper use.**

Always use the Abrasive Paper at a proper angle (15° to 30°) to the process surface. Do not operate other than on the surface used.

Negligence to do so causes the Paper to be blown off or damaged, which in turn may result in serious accidents.

The Abrasive Paper must be of the same size as the pad. (e. g. : The Abrasive Paper 1" must correspond with the 1" pad.) If an incorrect-size Paper is used, the Paper may be detached, causing serious accidents.

The chuck must have a diameter of 6mm. Do not use chucks not in conformity with the axis diameter of the pad to be used. Detachment of the chuck may result in serious accidents.

1. USAGE

This tool is a handheld air sander that grinds steels with an Abrasive Paper.

2. CHECK THE CONTENTS OF THE PACKAGE

Check the contents and make sure that the tool does not have any damage which may have occurred during transportation. The contents should correspond to the list as follows. In case of damage/missing parts, please contact the sales agent from whom you purchased the tool.

Package Contents	Qty	Check
Power Tool MAS-20B	1 set	
Cupla (Quick Coupling) 20SH	1	
Single Ended Spanner 14	2	
Bushing R1/4 x NPT1/4	1	
Back-up Pad 1"	1	
Back-up Pad 1.5"	1	
Back-up Pad 2"	1	
Abrasive Paper 1" X #60, #80, #100, #120	2 each	
Abrasive Paper 1.5" X #60, #80, #100, #120	2 each	
Abrasive Paper 2" X #60, #80, #100, #120	2 each	
Instruction Manual	1	
Declaration of Conformity	1	
Caution for Use	1	

3. PART NAME

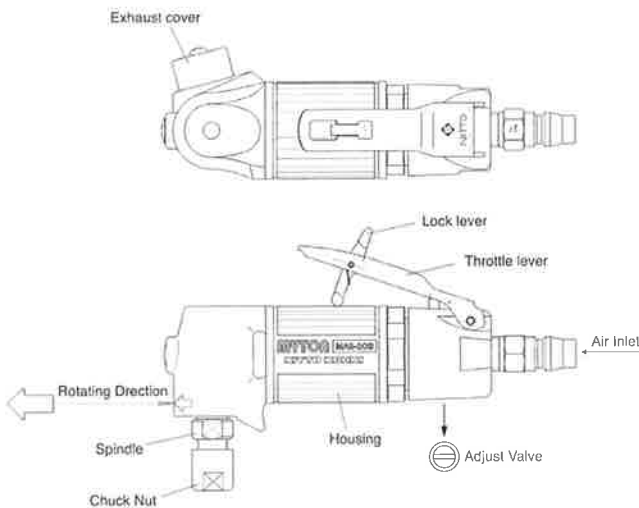


Fig. 1

4. AIR SUPPLY

4-1. Air Pressure

Adjust air pressure with the air regulator to the appropriate level for the pneumatic tool used.

Air pressure that is too low will stop the tool from operating at full capacity.

Air pressure that is too high may cause damage to the tool.

3-2. Air Line (Fig.2)

Use a 9.5 mm (3/8") I. D. connecting hose between the compressor and the tool.

Drained water, etc., if flown into the tool, could cause tool failure. Install an air filter between the compressor and the tool.

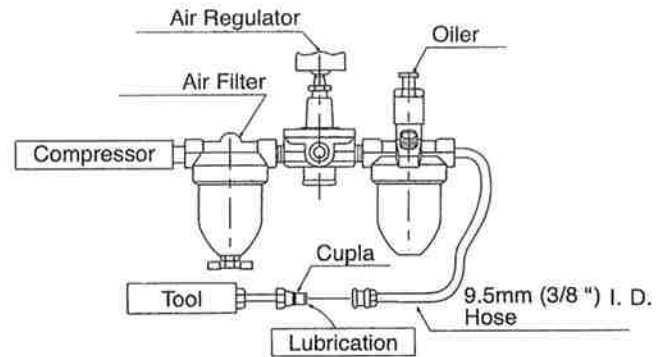


Fig. 2

4-3. Lubrication

Install an oiler between the compressor and the tool. Use the machine oil ISO VG-10. Failure to lubricate as required may result in damage to the tool. Use of oil that is too thick will reduce the performance of the tool.

5. PREPARATIONS

5-1. Thread Size of Hose Fitting

The product comes with a metal fitting with Rc(metric) thread. Connect the Bushing R thread x NPT thread included as standard accessories, if you would like to have American NPT thread instead.

6. MOUNTING AND REMOVING THE PAD AND ABRASIVE PAPER

! WARNING

Always turn off the air supply and disconnect the air supply hose beforehand whenever replacing the Back- up Pad and / or Abrasive Papers.

6-1. Pad

Removing

To loosen the Pad, fix the Spindle with a Spanner 14 and then turn the Chuck Nut counterclockwise with another Spanner 14.

Mounting

To attach the Pad, push its axis all the way into the Spindle, fix the Spindle with a Spanner 14, turn the Chuck Nut clockwise with another Spanner 14, and then tighten it securely.

6-2. Abrasive Paper

Removing

To detach the Abrasive Paper, take a grip on its edge, turn it counterclockwise, and then pull it away from the Pad.

Mounting

Align the center of the Abrasive Paper with that of the Pad. Move the Paper from side to side while pressing its center with the thumb. Push it in until

you hear a snap. And then turn the Paper clockwise to lock it.

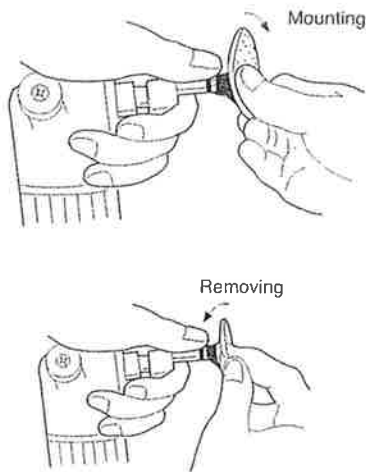


Fig. 3

7. HOW TO OPERATE THE TOOL

7-1. Start and Stop

- (1) Make sure that the Throttle Lever is set to off before connecting the air supply line to the MAS-20B.
- (2) While pressing the Lock Lever on the MAS-20B in ① the arrow direction, press down ② the Throttle Lever. And then the unit is turned on and started.
- (3) Releasing the hand from the Throttle Lever automatically turns off the unit to stop operation.

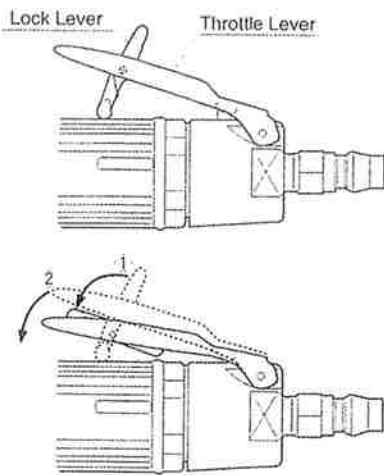


Fig. 4

7-2. Adjusting the rotation speed

You can adjust the rotation speed by turning the Adjust Valve with a screwdriver. Adjust the rotation speed according to the application. The Adjust Valve is set at the maximum rotation position before shipment.

8. STORAGE

⚠ CAUTION

When tool is not used, store it out of reach of children.

Avoid storing the tool in a location subject to high humidity. If the tool is left as it is used, residual moisture on the inside can cause rusting. Before storing, and after operation, oil the tool at the air inlet with machine oil ISO VG-10 and run it for a short time.

9. ORDERING SERVICE PARTS

For further operational and handling information or for replacement of parts and components, contact the company from whom you purchased the tool or an authorized dealer.

In ordering parts and components give each part number, part name and quantity required.

Use only NITTO genuine parts.

10. OPTIONAL PARTS

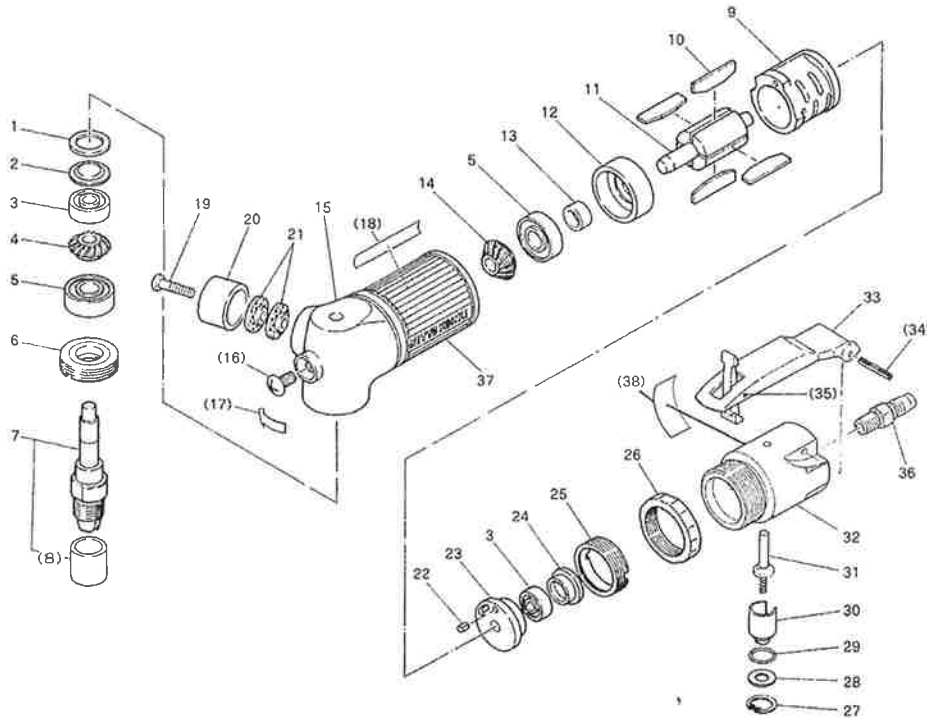
A variety of Abrasive Papers are available for the MAS-20B so that you can use them according to the application.

Part No.	Description	Qty
TA9B101	Abrasive Paper 1" x #40 Ass'y	25 pcs
TA9B102	Abrasive Paper 1" x #60 Ass'y	25 pcs
TA9B103	Abrasive Paper 1" x #80 Ass'y	25 pcs
TA9B104	Abrasive Paper 1" x #100 Ass'y	25 pcs
TA9B105	Abrasive Paper 1" x #120 Ass'y	25 pcs
TA9B106	Abrasive Paper 1" x #180 Ass'y	25 pcs
TA9B107	Abrasive Paper 1" x #240 Ass'y	25 pcs
TA9B108	Abrasive Paper 1" x #320 Ass'y	25 pcs
TA9B109	Abrasive Paper 1.5" x #40 Ass'y	25 pcs
TA9B110	Abrasive Paper 1.5" x #60 Ass'y	25 pcs
TA9B111	Abrasive Paper 1.5" x #80 Ass'y	25 pcs
TA9B112	Abrasive Paper 1.5" x #100 Ass'y	25 pcs
TA9B113	Abrasive Paper 1.5" x #120 Ass'y	25 pcs
TA9B114	Abrasive Paper 1.5" x #180 Ass'y	25 pcs
TA9B115	Abrasive Paper 1.5" x #240 Ass'y	25 pcs
TA9B116	Abrasive Paper 1.5" x #320 Ass'y	25 pcs
TA9B117	Abrasive Paper 2" x #40 Ass'y	25 pcs
TA9B118	Abrasive Paper 2" x #60 Ass'y	25 pcs
TA9B119	Abrasive Paper 2" x #80 Ass'y	25 pcs
TA9B120	Abrasive Paper 2" x #100 Ass'y	25 pcs
TA9B121	Abrasive Paper 2" x #120 Ass'y	25 pcs
TA9B122	Abrasive Paper 2" x #180 Ass'y	25 pcs
TA9B123	Abrasive Paper 2" x #240 Ass'y	25 pcs
TA9B124	Abrasive Paper 2" x #320 Ass'y	25 pcs

11. EXPLODED DIAGRAM : MAS-20B

⚠ WARNING

This diagram is for your reference only. Do not attempt to service or repair the Tool. Do not take the Tool apart. Contact an authorized Nitto dealer for all service and repair of the Tool. Improper service and repair can cause accidents and service injuries. Never attempt to modify the Tool. Never attempt service or repair the Tool yourself.



The part numbers with () are included in the Ass'y parts written above them.

No.	Part No.	Description	Qty	Price
1	TP10826	Packing	1	
2	TP10100	Bearing Cover	1	
3	TP03933	Ball Bearing 606ZZ	2	
4	TP14225	Gear	1	
5	TP00468	Ball Bearing 608ZZ	2	
6	TA98808	Bearing Set Screw Ass'y	1 set	
7	TA98856	Spindle Sub Ass'y	1 set	
8	(TP10742)	Chuck Nut	1	
9	TP14222	Cylinder	1	
10	TA9A295	Blade Ass'y (4 pcs)	1 set	
11	TP14224	Rotor	1	
12	TP14931	End Plate B	1	
13	TP06322	Spacer 8 x 11 x 3	1	
14	TP14221	Pinion	1	
15	TB02875	Housing Ass'y	1 set	
16	(TP06715)	Countersunk Head Screw 5 x 8	1	
17	(TP12437)	Label Rotating Direction	1	
37	TB08690	Grip Tube Ass'y	1	
18	(TQ12761)	Label Warning	1	
19	TP15164	Pan Head Screw M4 x 16	1	
20	TP14227	Exhaust Cover	1	
21	TP14228	Exhaust Plate	2	
22	TP00496	Spring Pin 2.5 x 6 AW	1	
23	TP10109	End Plate A	1	
24	TP10110	Cap	1	
25	TP10098	Lock Nut	1	
26	TP03468	Lock Ring	1	
27	TP03695	Internal Retaining Ring C-12	1	
28	TP06326	Spacer 6 x 12 x 12	1	
29	TP11997	O Ring KS-7	1	
30	TP06325	Adjust Valve	1	

No.	Part No.	Description	Qty	Price
31	TA93070	Valve Stem Ass'y	1 set	
32	TB08689	Valve Body Sub Ass'y	1 set	
38	(TQ12760)	Label CE Mark	1	
33	TB01152	Throttle Lever	1 set	
34	(TP00460)	Spring Pin 3 x 22	1	
35	(TP05498)	Spring Pin 2 x 16	1	
36	CP00881	20PM	1	

ACCESSORIES

No.	Part No.	Description	Qty	Price
	CB07839	20SH Ass'y	1 set	
	TP00475	Single Ended Spanner 14	2	
	TP02236	Bushing R1/4 x NPT1/4	1	
	TP18574	Back-up Pad 2"	1	
	TP18575	Back-up Pad 1.5"	1	
	TP18576	Back-up Pad 1"	1	
		Abrasive Paper 1" x #60	2	
		Abrasive Paper 1" x #80	2	
		Abrasive Paper 1" x #100	2	
		Abrasive Paper 1" x #120	2	
		Abrasive Paper 1.5" x #60	2	
		Abrasive Paper 1.5" x #80	2	
		Abrasive Paper 1.5" x #100	2	
		Abrasive Paper 1.5" x #120	2	
		Abrasive Paper 2" x #60	2	
		Abrasive Paper 2" x #80	2	
		Abrasive Paper 2" x #100	2	
		Abrasive Paper 2" x #120	2	
	TQ12762	Instruction Manual	1	
	TQ12763	Declaration of Conformity	1	



Overseas Affiliates / Offices

NITTO KOHKI U.S.A., Inc.

4525 Turnberry Drive, Hanover Park, IL 60133, U.S.A

Tel: (1)-630-924-9323 Fax: (1)-630-924-0303

<http://www.nittokohki.com/index.html>

NITTO KOHKI EUROPE Co., Ltd.

Unit 21, Empire Centre, Imperial Way,
Watford Hertfordshire, WD24 4TS, United Kingdom

Tel: (44)-01923-239668 Fax: (44)-01923-248815

<http://www.nitto.co.uk/>

NITTO KOHKI DEUTSCHLAND GmbH

Lerchenstr. 47, D-71144 Steinenbronn, Germany

Tel: (49)-7157-22436 Fax: (49)-7157-22437

<http://www.nitto-kohki.de/>

NITTO KOHKI AUSTRALIA Pty. Ltd.

77 Brandl Street, Eight Mile Plains QLD 4113,
Australia

Tel: (61)-7-3340-4600 Fax: (61)-7-3340-4640

<http://www.nitto-australia.com.au/>

NITTO KOHKI Co., Ltd. Singapore Branch

10 Ubi Crescent #01-62, Ubi Techpark Lobby D,
Singapore 408564

Tel: (65)-6227-5360 Fax: (65)-6227-0192

<http://www.nitto-kohki.co.jp/e/nksb/>

NITTO KOHKI Co., Ltd. Shanghai Representative Office

#1117 Ruijing Building, Maoming South Road,
Shanghai 200020 China

Tel: (86)-21-6415-3935 Fax: (86)-21-6472-6957

<http://www.nitto-kohki.cn/>

NITTO KOHKI Co., Ltd. Shenzhen Representative Office

#0726 International Culture Building, 3039, Shennan
Zhong Rd., Futian District, Shenzhen, 518003 China

Tel: (86)-755-8375-2185 Fax: (86)-755-8375-2187

<http://www.nitto-kohki.cn/>

NITTO KOHKI Co., Ltd. Bangkok Representative Office

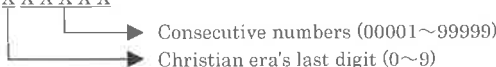
38Q, House Convent Bldg, 7th Floor, Unit 7A,
Convent Rd, Silom, Bangkok, 10500 Thailand

Tel: (66)-2-632-0307 Fax: (66)-2-632-0308

http://www.nittobkk.com/eng_index.htm

EC DECLARATION OF CONFORMITY

We hereby declare that the following our product conforms with the essential health and safety requirements of
EEC Directives.

Product: PNEUMATIC DISC SANDER
Model: MYTON: MAS-20B
Serial No: X X X X X


Manufacturer: NITTO KOHKI Co., Ltd.
2-9-4, Nakaikegami, Ohta-ku, Tokyo, 146-8555, Japan

Authorised Compiler in the Community:

Masatoshi Ogue
President

NITTO KOHKI EUROPE Co., Ltd.

Unit 21, Empire Centre, Imperial Way, Watford Hertfordshire, WD24 4TS, UK

Tel: (44)-01923-239668 Fax: (44)-01923-248815

Directive: 98/37/EC and 2006/42/EC Machinery Directive

The above product has been evaluated for conformity with above directives using the following European standards.

The technical construction file (TCF) for this product is retained at the above manufacturer's location.

Machinery Directive: EN ISO12100-1:2003, EN ISO12100-2:2003.
EN ISO14121-1:2007, EN792-8:2001+A1:2008, others

Sound Pressure/Power Level: EN ISO15744:2008, EN ISO4871:1996

Vibration Level: EN28662-1:1992, EN ISO8662-8:1997

Name: K. Kishi

Title: GENERAL MANAGER MACHINE TOOLS DIV.

Being the responsible person appointed and employed the manufacturer.