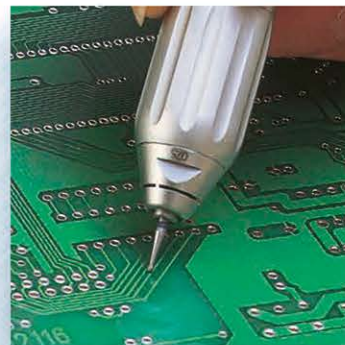


PRESTO II AIR TURBINE GRINDER ◀◀

ULTRA-HIGH SPEED AIR TURBINE GRINDER

# PRESTO II



320,000 min<sup>-1</sup>

ø1.6 mm Bur Only

- Ultra high speed 320,000 min<sup>-1</sup> non-lube air turbine.
- It is most suitable for precision processing works such as small precision parts, ceramic, correction of printed circuit board, etc. due to its non-lube handpiece.
- Flexible tubing ensures excellent workability reducing fatigue to the operator's hand for long continuous use.

## PRESTO II Standard Set

Code No. **1125**

Model **PR2-304S**

Standard Equipment

- Presto Handpiece (PR-304) : 1 pc.
- Air Line Kit (PR2-06) : 1 pc.
- Foot Controller (AFC-40) : 1 pc.
- Handpiece Holder (Z014) : 1 pc.



Specifications

Rotating Speed	: 320,000 min <sup>-1</sup>
Proper Air Pressure	: 0.25 MPa
Air Consumption	: 40 NL/min
Inside Diameter	: ø1.6 mm Bur Only
Filter Mesh	: 5 µm

## PRESTO Handpiece

**320,000 min<sup>-1</sup>**

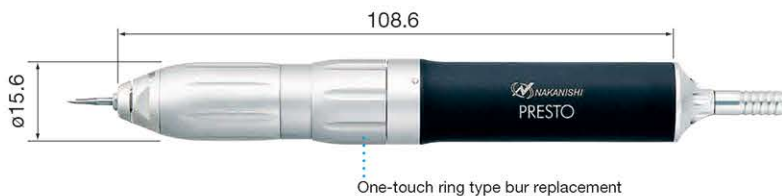
Code No. **1122**

Model **PR-304**

◆ Weight : 71 g (w/o Hose)

Standard Accessories

- 2 m Hose



- Ultra-high speed no lube air turbine handpiece ideal for delicate processing application.
- Built-in dust protect mechanism developed by NAKANISHI ensures long durability.
- Chip air blows away the cutting powder and cools the cutting tool.
- Flexible tubing ensures excellent workability reducing fatigue to the operator's hand for long continuous use.

### PRESTO II Spare Parts

Product	Description / Specifications	Code No.	Model
	PRESTO II Air Line Kit (w/o Lubricator / Filter Mesh 5 µm)	<b>1126</b>	PR2-06
	PRESTO II Cartridge	<b>1120</b>	PR-03
	Foot Controller	<b>1124</b>	AFC-40
	Piping Hose (ø6.0) 2 m Long	<b>2041</b>	K-237
	Air Turbine Hose (ø5.1) 2 m Long	<b>2042</b>	K-238
	Pin Spanner	<b>2002</b>	T-751

### ø1.6 mm tools for PRESTO II

Please see the NAKANISHI "POLISHING TOOLS" Catalog



Electroplated Diamond Burs



Carbide Cutters



Mounted Points



Rubberized Abrasives

◆ Order by Code No.

Electrically Driven

EnviEVO  
ESPERT

Air Driven

ROTUS  
IMPULSE  
PRESTO II

General Parts

GENERAL  
PARTS

CAUTION

Exclusive Tools

EXCLUSIVE  
TOOLS

INDEX

Protective  
Equip.